

Cub Cadet®

LISTA
making workspace work®

Re-Imaging Parts, Service and Repair Workspaces for Cub Cadet Dealers.

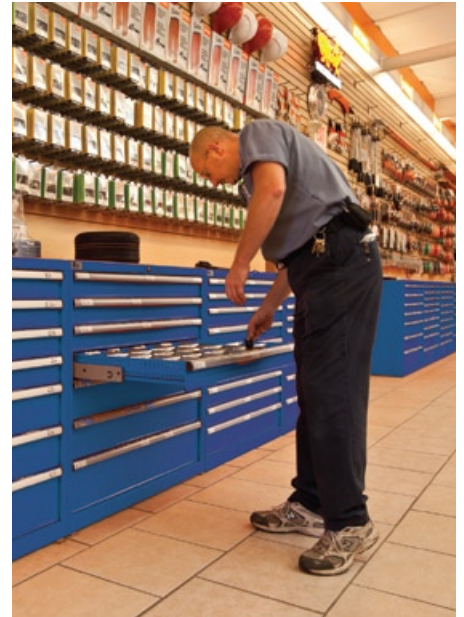




Reworking your image. Making workspace work.

Outdoor equipment retailers and service providers often struggle with inefficient parts storage, disorganized workspaces and cluttered floors and shelves, leading to subpar productivity, poor appearance or worse – lost customers. Sound familiar? Then it's time to re-image.

Replacing open shelving with attractive high-density storage systems can reduce your current parts storage space by up to 50 percent, opening up your floors and counter space or enabling you to add inventory. This takes the hassle out of locating and accessing large and small parts, while facilitating smoother customer transactions and expanding product display areas. Plus, it improves parts security and inventory control, eliminating surprise stock-outs.



Cub Cadet is teaming up with Lista International, a world leading producer of productivity-enhancing storage and workspace systems, to supply quality storage cabinets and workbenches to Cub Cadet Dealers for a cleaner, more organized and functionally-efficient store. One that is critical to retaining customers and optimizing productivity.



Your custom workspace solution starts with complimentary ListaWorks.™

Take advantage of Lista's well-regarded ListaWorks™ design program to improve the layout and functionality of your parts and service areas – at no cost to you! The design process will provide a high-quality, custom-configured solution that precisely fits your unique space and usage requirements to optimize your dealership's productivity and profitably. Use the program to remodel existing departments or outfit new ones.

Lista Script labeling software. Inventory management that's write on.

Lista helps Cub Cadet dealerships operate efficiently and stay organized – right down to the smallest storage compartment. And we have the tools to prove it. With free Lista Script software, you can customize labels that identify the contents of every single compartment, letting you locate items quickly and know at a glance whether or not you need to order more. Label compartments by part number or barcode or both. It's the ultimate tool for helping you manage inventories so you have what you need, when you need it, without overstocking.



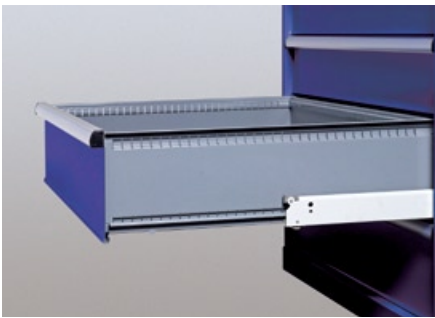


General parts storage.

Use your space wisely.

Modular drawer storage cabinets are ideal for outdoor equipment parts operations because they can be strategically placed behind transaction counters for quick and easy access to the most popular parts. A range of drawer widths and heights – and totally flexible drawer partitioning – combine to provide maximum storage density, letting you make the most of your department's cubic space. Store and label small, medium and large items – and create a dedicated storage bay – by manufacturer. Modular drawer storage cabinets are fully scalable and adaptable to your changing inventories and business growth.

Drawer storage cabinet features and benefits.



Unique drawer construction: guide track supports, and front and rear panels welded to the drawer bottom, provide full dimensional stability

Exclusive drawer suspension system: features quiet polyoxymethylene (POM) bearings, and delivers strength, stability and wear resistance for long-term performance

Full drawer extension: drawers slide out 100% even with a full load, allowing complete use of the farthest corners and easy access to all contents

Two drawer weight capacities: choose 440lb. (200kg) and/or 165 lb. (75kg) full-extension weight capacity, depending on the drawer footprint

One-drawer-at-a-time safety system: patented Preventip® interlock system guards against tipping by locking the remaining drawers closed when one of them is extended

Full-height sidewalls: 6 different full sidewall heights provide maximum use of cubic storage volume so there's no wasted space

Hinged drawer handle covers: protects labels from handling and easily opens and closes to allow labels to be added and changed; use free Lista Script software to create your own drawers labels

Customizable drawer layouts: partitioning slots on all four sides allow flexible subdivision for better item organization and faster retrieval

Drawer dividers: angled top edges allow fast, accurate identification of contents and accommodate Lista Script labels and most bar code labels

Flush handles: when closed, drawer handles are flush with cabinet housing so nothing protrudes or catches clothing, improving safety and appearance

Variety of locking systems: enable secure, safe storage

Secure cabinet placement: cabinets can be anchored to the floor or bolted to adjacent units for stable, secure positioning with no shifting





General Parts Storage Products



POPULAR CONFIGURATIONS



HS1350-1419FA-FT
Small Parts Storage
 40¼" W x 22½" D x 59½" H
 14 drawers, 372 compartments
 Fork truck base
 Keyed-alike lock



HS1350-1016FA-FT
Small and Medium Parts Storage
 40¼" W x 22½" D x 59½" H
 10 drawers, 171 compartments
 Fork truck base
 Keyed-alike lock



HS1350-0903FB-FT
Medium Parts Storage
 40¼" W x 22½" D x 59½" H
 9 drawers, 141 compartments
 Fork truck base
 Keyed-alike lock



HS1350-0801FB-FT
Medium Parts Storage
 40¼" W x 22½" D x 59½" H
 8 drawers, 102 compartments
 Fork truck base
 Keyed-alike lock



HS1350-0702FB-FT
Large Parts Storage
 40¼" W x 22½" D x 59½" H
 7 drawers, 66 compartments
 Fork truck base
 Keyed-alike lock



HS0600-TSC
Bulk Storage
Stackable Shelf Cabinet
 40¼" W x 22½" D x 27½" H
 Adjustable shelf, bottom shelf
 No base



Parts and transaction counters.

Organization and efficiency front and center.

Your issue and parts counters are at the front lines of customer and service technician interactions. Parts transaction counters improve your image by keeping fast-moving items close at hand, supporting displays and catalogs, and providing an inviting area for business transactions. Transaction counters maximize usable storage and workspace, while improving item retrieval and inventory control. Organize your parts department and increase your efficiency and customer responsiveness by combining a variety of drawers for small, medium and large item storage, plus shelves and roll-out trays for bulk storage.

Parts and transaction counter features and benefits.

Modular design: lets you customize the size of your transaction counters based on the size of your business and the number of service terminals you require

Designated functional bays: create a utility bay for printers, office supplies, computer power and network cables, and configure another bay to hold the Top 100 fastest moving parts

High-density drawer storage cabinets: maximum cubic capacity

Subdividable drawers: stored items have their own specific compartments, so they're well protected and easy to retrieve

Drawer dividers: accommodate Lista Script labels and most bar code labels, permit easy identification of compartment contents, and promote greater inventory accuracy

Shelf cabinets: allow you to store bulky parts adjacent to smaller items in drawers



Roll-out trays: ergonomic, full-extension trays allow easy access to the very back, while supporting up to 440 lbs. of storage

Durable counter tops: whether butcher block, stainless steel or plastic laminate, tough Lista counter tops stand up to daily pounding and keep looking good

Handles are flush with the cabinet housing: when the drawers are closed, nothing protrudes from the housing to snag clothing; use free Lista Script software to create your own drawer labels

100% full drawer extension: drawer and roll-out tray contents are easily accessible, even in the farthest corner



Parts and Transaction Counter Products



POPULAR CONFIGURATIONS



HS0900-0902FB-FT Small Parts Storage

40¼" W x 22½" D x 41¾" H
9 drawers, 248 compartments
Fork truck base
Keyed-alike lock



HS0900-0808FA-FT Small and Medium Parts Storage

40¼" W x 22½" D x 41¾" H
8 drawers, 174 compartments
Fork truck base
Keyed-alike lock



HS0900-0608FA-FT Medium Parts Storage

40¼" W x 22½" D x 41¾" H
6 drawers, 102 compartments
Fork truck base
Keyed-alike lock



HS0900-0304F-FT Bulk Storage

40¼" W x 22½" D x 41¾" H
3 roll-out trays
Fork truck base



HS0900 Work Top Options

HS1BCT, 40¼" W x 22½" D x 1¾" H
butcher block top

HS2BCT, 80½" W x 22½" D x 1¾" H
butcher block top



Service and repair workbenches.

Pump up the productivity.

Your workbenches need to look good, get the job done, and radiate professionalism in order to capture and retain not only your customers, but also your skilled personnel. These service and repair workbenches are designed with features that optimize efficiency in all your repair processes. Add overhead storage for bulk items and reference materials. Integrate drawer storage into workbenches using hanging cabinets. And facilitate repair productivity with above-the-worksurface lighting. The height of the workbenches supports repair activity whether the technician needs to stand or sit, and lets you store our mobile toolboxes under the bench and out of the way.

Service and repair workbench features and benefits.



Durability: our workbenches have proven to stand up to the harsh punishment of daily use

Worksurface options: choose from a variety of sturdy, yet classy, worksurfaces including stainless steel, butcher block, and galvanized steel

Productivity: technicians are more efficient and productive when their efforts are supported by workbenches that offer plenty of room and optimal organization

Lockable cabinets: improve your service department's security, reduce shrinkage, and give technicians a place for secure personal storage

Above-worksurface accessories: add overhead cabinets, shelving and other accessories to your workbench for the ideal workstation

Mobile carts and toolboxes: durable mobile toolboxes safely store and transport tools and other items to the point of repair. Stash them beneath the workbench when not in use (see pages 10-11 for more information)

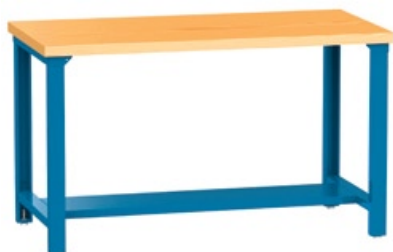




Service and Repair Bench Products



POPULAR CONFIGURATIONS



WB10-60BT
Heavy-Duty 60" Workbench
with Butcher Block Top
 Includes 2 legs,
 60" W X 12" D bottom shelf



WB14-60GT
Heavy-Duty 60" Workbench
with Galvanized Steel Top
 Includes 2 legs,
 60" W X 12" D bottom shelf



WB12-72BT
Heavy-Duty 72" Workbench
with Butcher Block Top
 Includes 2 legs,
 60" W X 12" D bottom shelf



WB15-72GT
Heavy-Duty 72" Workbench
with Galvanized Steel Top
 Includes 2 legs,
 72" W X 12" D bottom shelf



Riser Shelf & Overhead Cabinet
 Combination steel stationary riser shelf with backstop (15" D x 13½" H) with 16" high overhead cabinet mounted on shelf. Overhead cabinet has retractable door.
SRS/OHC60-16: 60" long with (1) 60" long overhead cabinet
SRS/OHC72-16: 72" long with (2) 36" long overhead cabinets



Hanging Drawer Cabinets
WBHC0150-1: (1) 5" high drawer (housing is 16¾" W x 19¼" D). Drawer capacity is 65 lbs.
WBHC0300-2: (2) 5" high drawers (housing is 16¾" W x 19¼" D). Drawer capacity is 65 lbs.



Technician Series Toolboxes.

Hold more, do more.

There's typical tool storage; then there are Technician Series Toolboxes. You get it all – high-volume storage, rugged design backed by a lifetime warranty, welded construction and high-weight capacity drawers. All at a price that boxes out the competition. Technician Series Toolboxes keep your most common tools and fastest moving parts within arm's reach at all times, giving your productivity upward mobility.

Technician Series Toolbox features and benefits.

Full-extension drawers: let you use and easily access every square inch of area in the drawer

Heavy-weight tool support: each drawer holds up to 440 lbs.

Flexible drawer interiors: drawers come with a mesh drawer liner, or choose from optional plastic bins, steel dividers or cut-out foam

Optional work top: butcher block top turns your toolbox into a productive work area

Bases beyond the basics: whether you need mobility or a stationary solution, Lista offers base options from mobile casters, to fixed fork truck bases, to stationary raised bases with leveling

Safe transport: mobile units include individual drawer latches to safely keep contents in place during transport

Secure storage: units include removable core lock with keyed-alike capability for multiple toolboxes and/or workbenches

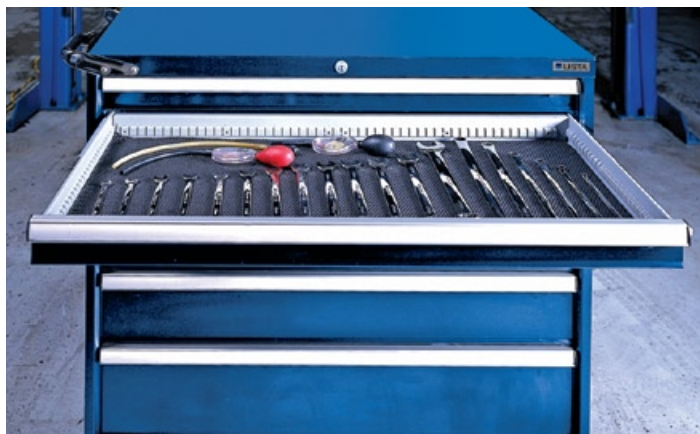
No-snag drawer handles: are flush with housing so clothing or other items won't catch edges

Large item storage: optional shelf-and-door compartments for bulk storage





Technician Series Toolbox Products



POPULAR CONFIGURATIONS



ST0750-0505FL-M
Mobile Toolbox – 5 Drawers
28¼" W x 22½" D x 41½" H
5 drawers with 165 lb. capacity
and mesh drawer liners
Includes 6" casters, handle
Individual lock



ST0750-0604FL-M
Mobile Toolbox – 6 Drawers
28¼" W x 22½" D x 41½" H
6 drawers with 165 lb. capacity
and mesh drawer liners
Includes 6" casters, handle
Individual lock



HS0750-0604FL-M
Large Mobile Toolbox – 6 Drawers
40¼" W x 22½" x 41½" H
6 drawers with 165 lb. capacity
and mesh drawer liners
Includes 6" casters, handle
Individual lock



HS0750-0708FL-M
Large Mobile Toolbox – 7 Drawers
40¼" W x 22½" x 41½" H
7 drawers with 165 lb. capacity
and mesh drawer liners
Includes 6" casters, handle
Individual lock



Work Top Options

ST1BCT, 28¼" W x 22½" D x 1¾" H
butcher block top

HS1BCT, 40¼" W x 22½" D x 1¾" H
butcher block top



Cub Cadet Transaction Details:

Terms and Conditions:

Eligible for standard Co-Op reimbursement

Eligible items must be in PMS 293 blue

Order directly through your Lista representative

Qualifying orders can be billed to your Cub Cadet open account



Lista International Corporation
106 Lowland Street
Holliston, MA 01746-2094 USA
sales@listaintl.com

Phone: (800) 722-3020
Fax: (508) 626-0353
www.Lista-OutdoorEquip.com

ISO 9001 Certified

©2010 Lista International Corp. Printed in U.S.A. 09-10 10M

Lista®, Making Workspace Work®, Align®, Arlink®, Definite Positioning System®, PrevenTip®, Shelf Converter® and Storage Wall® are registered trademarks of Lista International Corporation.